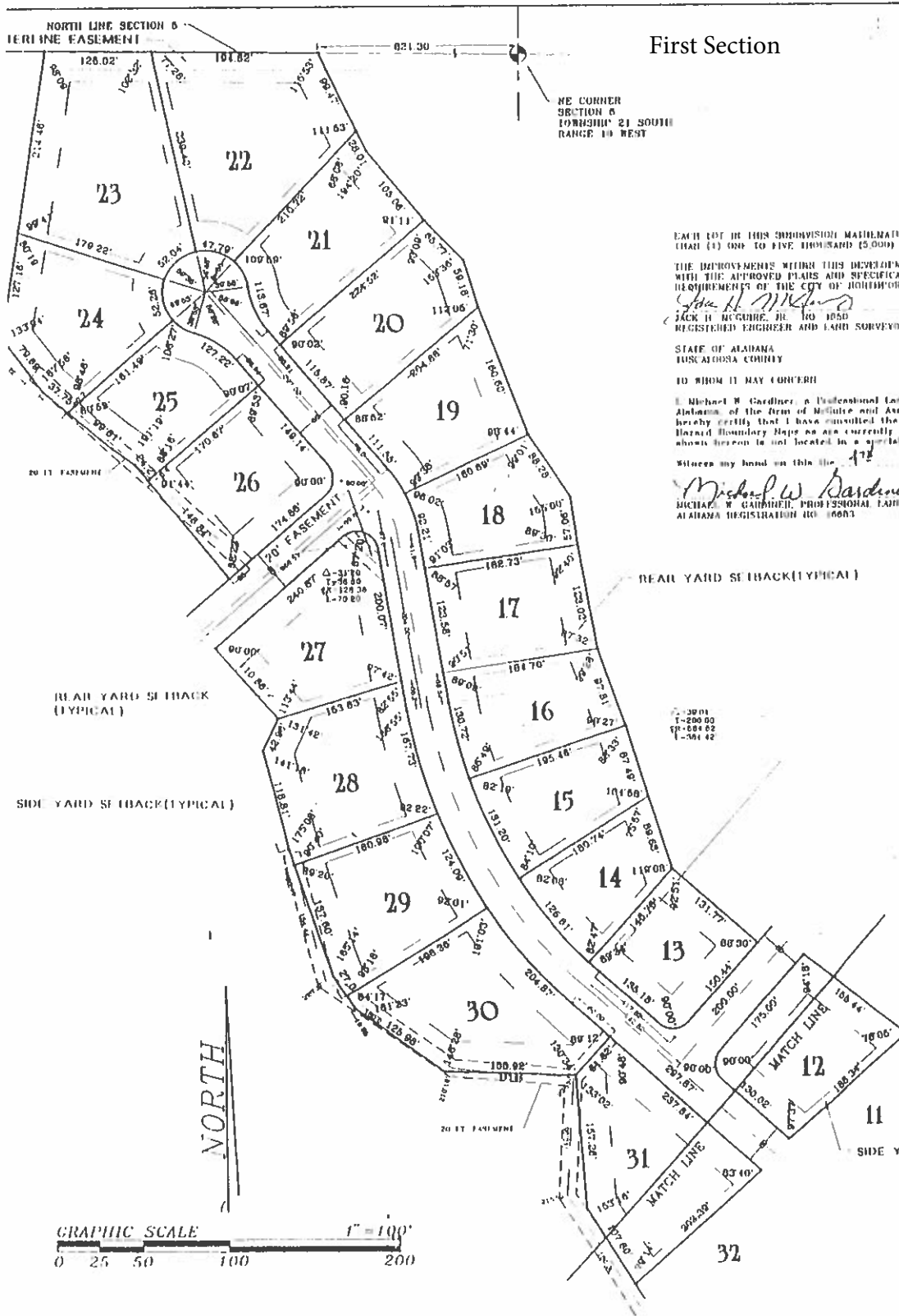


NORTH LINE SECTION 6  
TERMINATE EASEMENT

# First Section

NE CORNER  
SECTION 6  
TOWNSHIP 21 SOUTH  
RANGE 19 WEST



EACH LOT IN THIS SUBDIVISION MATHEMATICALLY  
CONTAINS ONE TO FIVE THOUSAND (5,000)

THE IMPROVEMENTS WITHIN THIS DEVELOPMENT  
WITH THE APPROVED PLANS AND SPECIFIC  
REQUIREMENTS OF THE CITY OF HOUSTON

*John H. McKeon*  
JACK H. MCKEON, JR. P.E. 1053  
REGISTERED ENGINEER AND LAND SURVEYOR

STATE OF ALABAMA  
TUSCALOOSA COUNTY

TO WHOM IT MAY CONCERN

I, Michael W. Gardner, a Professional Land  
Surveyor of the State of Alabama, do hereby  
certify that I have consulted the  
Record Boundary Map as now currently a  
showing thereon is not located in a special

Witness my hand on this the 17th

*Michael W. Gardner*  
MICHAEL W. GARDNER, PROFESSIONAL LAND  
SURVEYOR ALABAMA REGISTRATION NO. 16683

REAR YARD SETBACK (TYPICAL)

REAR YARD SETBACK (TYPICAL)

SIDE YARD SETBACK (TYPICAL)

NORTH

